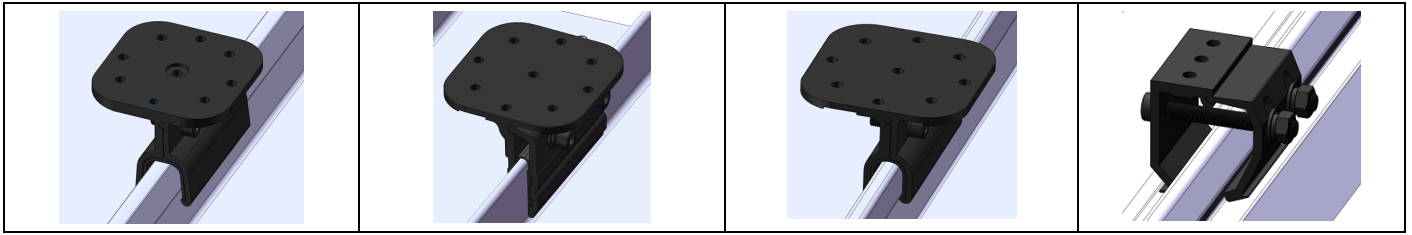
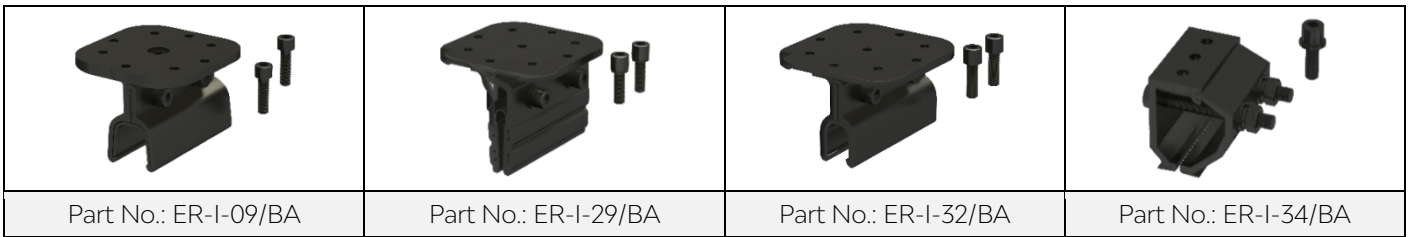


Assembly



Component



Technical Specification

Roof type	Lysaught Klip Lok 700 Classic, Lysaught Klip-Lok 700 High Strength, Lysaught Klip-Lok 406, Stramit Speed Deck Ultra, Stramit Speed Deck 500, Fielders Kingklip 700, Stratco Topdeck 700, Metroll Metlok 700, Metroll Metlok 500, Revolution Maxline 340, Steeline Lokdek 680, Steeline Steel-Rib 500 (ST28), BlueScope Rev-Klip 700, Lysaught LongLine 305		
Fixing Method	Fixing on crown/rib of metal sheet	ER-I-09/BA	ER-I-29/BA
Dimensions	ER-I-09/BA: L100mm*W100mm*H61.3mm ER-I-29/BA: L100mm*W100mm*H69.7mm ER-I-32/BA: L100mm*W100mm*H57.9mm ER-I-34/BA: L60mm*W88mm*H55.5mm		
Weight	ER-I-09/BA: 0.395 Kg; ER-I-29/BA: 0.419 Kg ER-I-32/BA: 0.342 Kg; ER-I-34/BA: 0.225 Kg	ER-I-32/BA	ER-I-34/BA
Packaging	ER-I-09/BA: 12 units per pack; 4 packs (48 units) per carton ER-I-29/BA: 16 units per pack; 2 packs (32 units) per carton ER-I-32/BA: 16 units per pack; 4 packs (64 units) per carton ER-I-34/BA: 24 units per pack; 4 packs (96 units) per carton		
Material	Main parts: AL6005-T5 Fastener: Screws and Washers are made of SUS 304; Nuts are made of carbon steel with Zinc-nickel alloy coating Rubber Pad: EPDM		
Color	Black (full anodized, no less than 10 µm)		
Standard	AS NZS1170.2-2011		