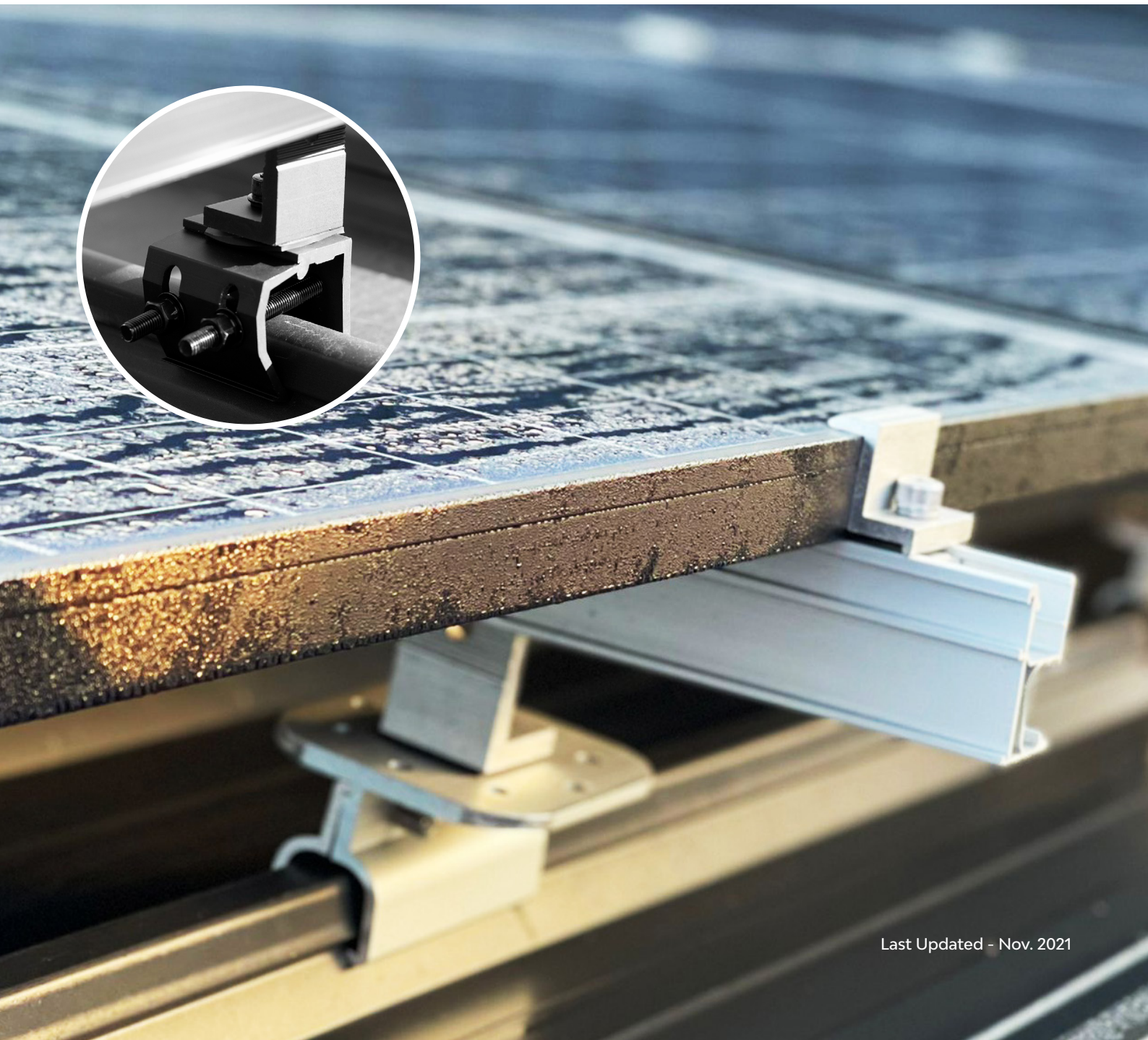
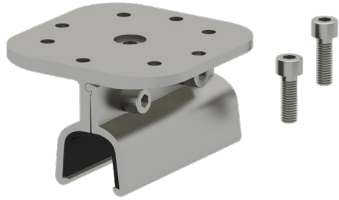


Non-Penetrative Clamps



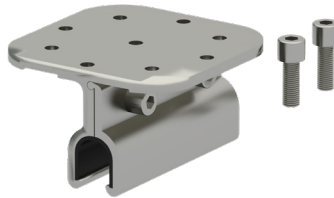
Non-Penetrative Clamps

[ER-I-09](#)



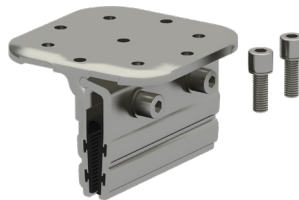
- [Lysaght Klip-lok 700 Classic](#)
- [Lysaght Klip-Lok 700 Hi-Strength](#)
- [Stramit Speed Deck Ultra](#)
- [Fielders King Klip 700](#)
- [Stratco Topdeck 700](#)
- [Metroll Metlok 700](#)
- [Stramit Speed Deck 500](#)

[ER-I-32/AU](#)



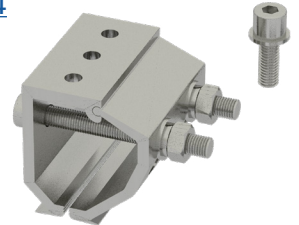
- [Lysaght Klip-Lok 406](#)

[ER-I-29/AU](#)



- [Lysaght Longline 305](#)

[ER-I-34](#)



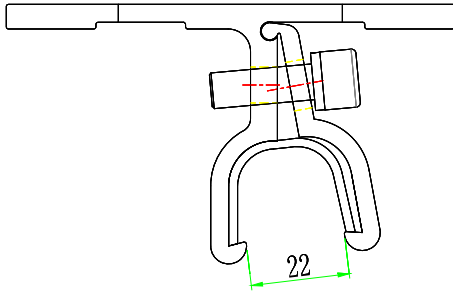
- [Lysaght Klip-lok 700 Classic](#)
- [Lysaght Klip-Lok 700 Hi-Strength](#)
- [Lysaght Klip-Lok 406](#)
- [Stramit Speed Deck Ultra](#)
- [Fielders King Klip 700](#)
- [Stratco Topdeck 700](#)
- [Metroll Metlok 700](#)
- [Stramit Speed Deck 500](#)
- [BlueScope Rev-Klip 700](#)
- [Metroll Metlok 500](#)
- [Steeline Steel-Rib 500 \(ST-28\)](#)
- [Revolution Maxline 340](#)
- [Steeline Lokdeck 680](#)
- [Lysaght Longline 305](#)

Appendix A: Klip Lok Interface Dimensions (mm)

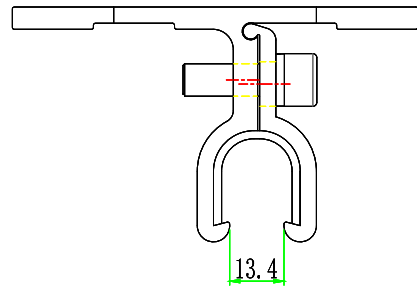
ER-I-09 Drawings	
Maximum opening	Minimum opening

ER-I-32/AU Drawings

Maximum opening

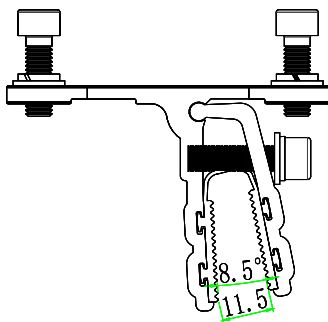


Minimum opening

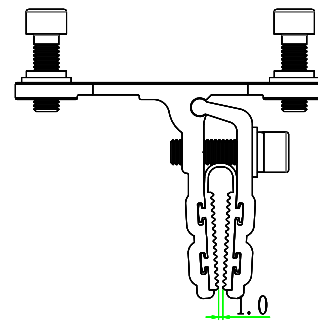


ER-I-29/AU Drawings

Maximum opening

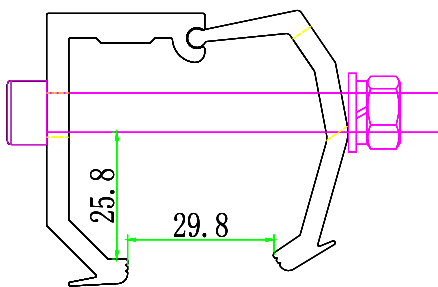


Minimum opening

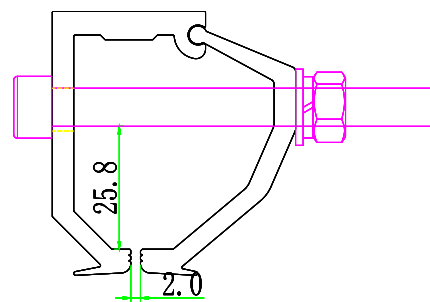


ER-I-34 Drawings

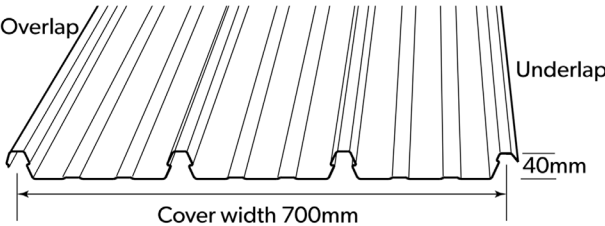
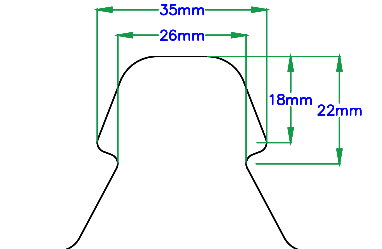
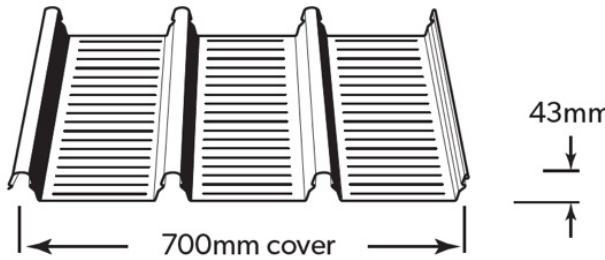
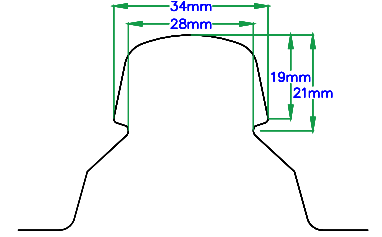
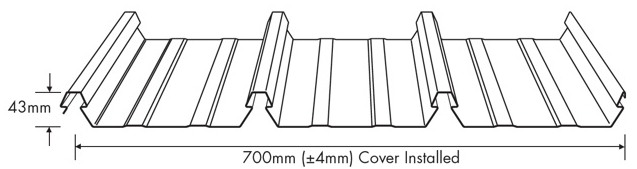
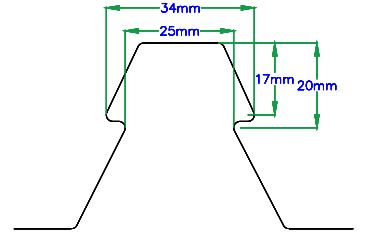
Maximum opening



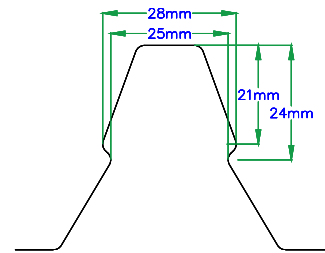
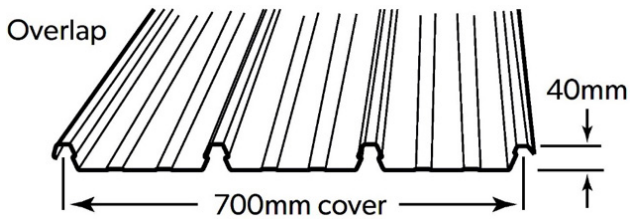
Minimum opening



Appendix B: Roofing Sheet Profiles

Lysaght Klip-Lok 700 Classic	
 <p>Overlap</p> <p>Underlap</p> <p>40mm</p> <p>Cover width 700mm</p>	 <p>35mm</p> <p>26mm</p> <p>18mm</p> <p>22mm</p>
Suitable interfaces: ER-I-09 and ER-I-34	Source: Steeline website
Lysaght Klip-Lok 700 Hi-Strength	
 <p>43mm</p> <p>700mm cover</p>	 <p>34mm</p> <p>28mm</p> <p>19mm</p> <p>21mm</p>
Suitable interfaces: ER-I-09 and ER-I-34	Source: Steeline website
Stramit Speed Deck Ultra	
 <p>43mm</p> <p>700mm (±4mm) Cover Installed</p>	 <p>34mm</p> <p>25mm</p> <p>17mm</p> <p>20mm</p>
Suitable interfaces: ER-I-09 and ER-I-34	Source: Manufacturer

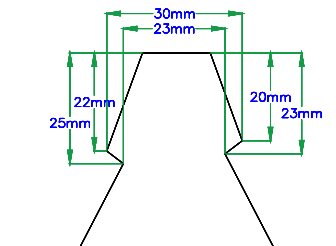
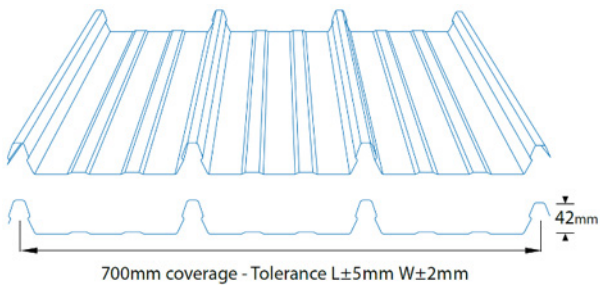
Fielders King Klip 700



Suitable interfaces: [ER-I-09](#) and [ER-I-34](#)

Source: Steeline website

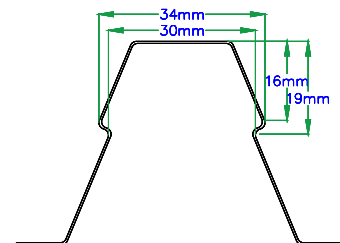
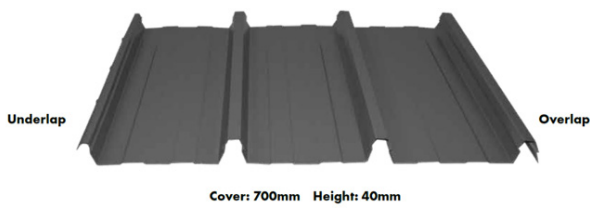
Stratco Topdeck 700



Suitable interfaces: [ER-I-09](#) and [ER-I-34](#)

Source: Steeline website

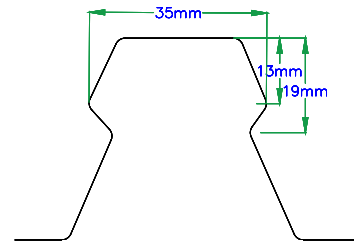
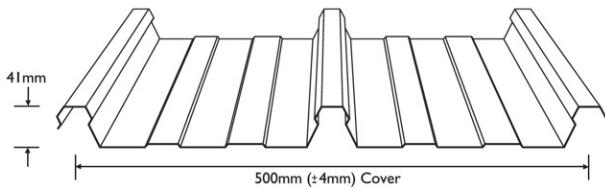
Metroll Metlok 700



Suitable interfaces: [ER-I-09](#) and [ER-I-34](#)

Source: Steeline website

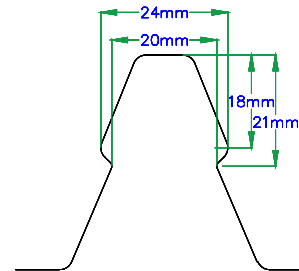
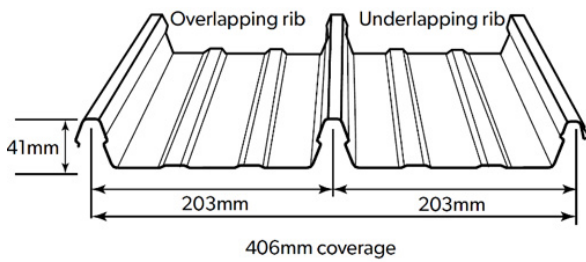
Stramit Speed Deck 500



Suitable interfaces: [ER-I-09](#) and [ER-I-34](#)

Source: Manufacturer

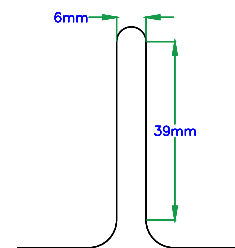
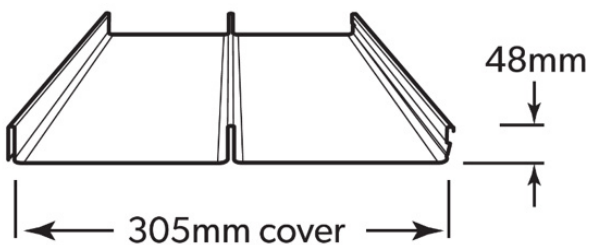
Lysaght Klip-Lok 406



Suitable interfaces: [ER-I-32/AU](#) and [ER-I-34](#)

Source: Steeline website

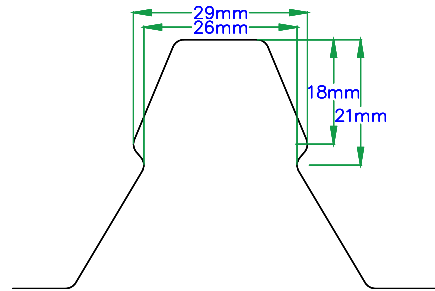
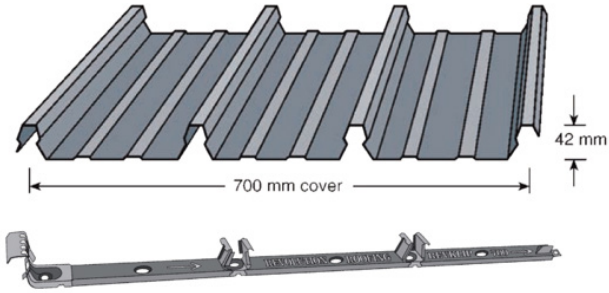
Lysaght Longline 305



Suitable interfaces: [ER-I-29/AU](#) and [ER-I-34](#)

Source: Steeline website

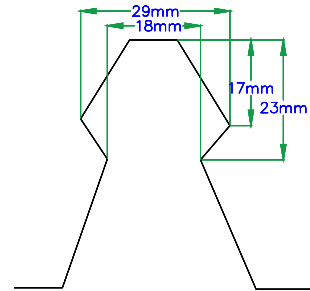
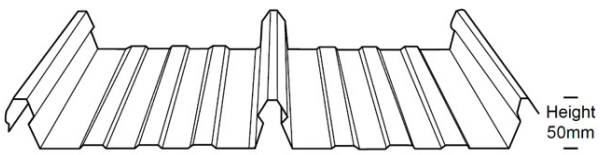
BlueScope Rev-Klip 700



Suitable interfaces: [ER-I-34](#)

Source: Manufacturer

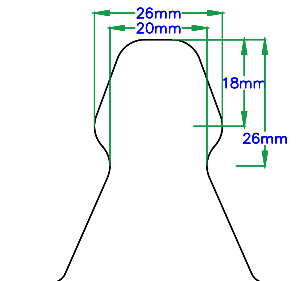
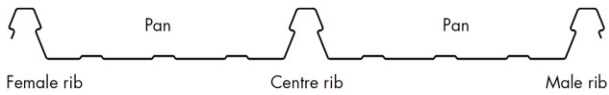
Metroll Metlok 500



Suitable interfaces: [ER-I-34](#)

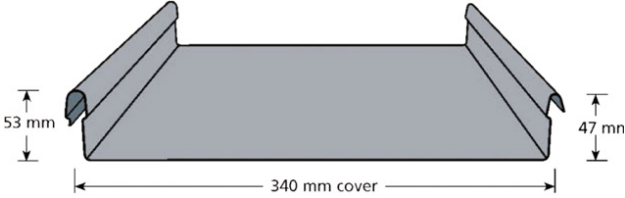
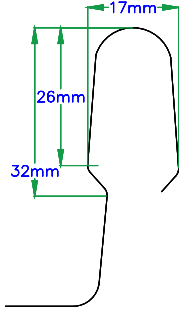
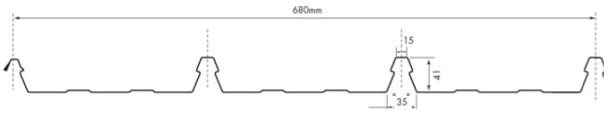
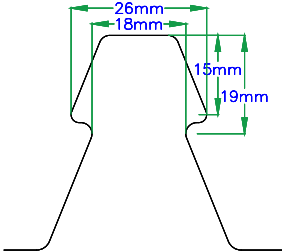
Source: Third party

Steeline Steel-Rib 500 (ST-28)



Suitable interfaces: [ER-I-34](#)

Source: Steeline website

Revolution Maxline 340	
	
Suitable interfaces: ER-I-34	Source: Manufacturer
Steeline Lokdeck 680	
	
Suitable interfaces: ER-I-34	Source: Steeline website

Appendix C: General Notes

1. The aim of this document is primarily to depict technical drawings of Clenergy non-penetrative interfaces/clamps and their corresponding certified roofing sheets.
2. The roofing sheet dimensions depicted in this document cannot solely confirm or identify Klip-Lok roofing sheets. This is primarily due to the existence of dimensionally similar looking roofing sheets but with different strength properties.
3. Some suggested roofing sheet identification methods, outside the scope of this document, include:
 - a. Building Drawings: Structural or Architectural
 - b. Roofing Sheet Labels: Generally located on underneath the roofing sheet
 - c. Information on Packaging
4. Roofing sheet drawings are only for reference as they are subject to accuracy in comparison to manufacturer CAD drawings.







PV-ezRACK®

Clenergy

1/10 Duerdin St
Clayton VIC 2168
Australia

Phone: +61 3 9239 8088
Email: sales@clenergy.com.au
Web: www.clenergy.com.au

 @ClenergyGlobal / @ClenergyClub / ClenergyAUS  @Clenergy  @ClenergyClub
 @Clenergy_global  @Clenergy

A Clenergy Technologies Company